

TLC Pre-School where kids come to learn and play!



Everything you wanted to know - and more



Starting Pre-School can be a difficult time for your child -- and for you! The TLC staff hopes to make this transition as smooth as possible. The following "Frequently Asked Questions" may be of interest to you!

Inside, you'll find answers to such questions as:

- ☺ Is there rest or naptime for my child?
- ☺ What types of snacks are served?
- ☺ Should I pack a change of clothing for my child?
- ☺ Are there any field trips during the day?

Do I have to drop my child off at 7:00 am?

No, but we would like all children to be at the center, signed in and ready to start their day by 8:45 am. We start circle at 9:00 am.

Is there Board of Ed. Bus Transportation to the Pre-School?

Unfortunately, because we do not follow the Board of Ed. school schedule, there is no BOE bus transportation.

What activities are there during the day?

There is a blend of structured and non-structured activities throughout the day.

These may include: Arts & Crafts, Games, Music and Outside Play. A selection of centers are also available: Science, Library, Music, Dramatic Play, Writing, Blocks, Math, Computers and Free Art. See sample schedule on page 4.

Are the three and four year olds separate?

The three and four year olds share the classroom at the Pre-School. They begin their morning with the morning circle, which includes but is not limited to: calendar, weather and daily discussion. The four year olds are able to serve as role models for the three year olds.

What qualifications do the TLC Pre-School staff have?

At all times there are caring, qualified staff at the Pre-School. Our teachers have a wide variety of educational backgrounds ranging from a Bachelor of Science and a CDA Degree to our High School counselors looking to enter the educational field in college. All of our staff have had vast experience working with children and provide a wealth of knowledge in the areas of curriculum and classroom management. They are able to collaborate and use their creativity from previous experiences to create a quality program here at TLC Pre-School.



Do I pack a lunch for my child?

TLC will provide snacks while the children are with TLC. You must, however, pack a lunch for your child. Please use ice packs to keep the food cool. The Pre-School is equipped with a microwave, and TLC staff are able to warm dishes for your children.

What types of snacks are served during the day?

A variety of nutritious and “fun” snacks are provided at snack times. TLC makes every effort to follow good nutritional practices and to provide wholesome and healthy foods during the day. There is always a choice of snacks each day. Typical snacks include: fruit, crackers, cereal and graham crackers and there is always a juice drink or milk offered. Children are presented with quite a variety!

My child has food allergies.

Can I send snacks in?

Children with special eating requirements are encouraged to bring in their own snacks. TLC staff will make sure that your child’s special food is served at snack time.

Please be sure to notify the Pre-School Site Director of any allergies or eating restrictions your child has.



Should I pack a change of clothing for my child?

Children need TWO complete sets of clothing (it is not recommended, it is required). By complete we mean pants, shirt, underwear and socks. Some parents opt to include a sweat-shirt or sweater as the temperature in the room can vary. An extra pair of sneakers or shoes are also required. Often their shoes get wet if they have an accident or they can get them muddy outside. All personal items should be in a large zip lock bag and be clearly labeled with your child’s name.

If my child becomes sick while at Pre-School, what happens?

TLC cannot keep a child who is ill. TLC must follow the State of Connecticut guidelines for sick childcare. If a child becomes ill at TLC, we will contact the parent and request that the child be picked up immediately.

Is there a rest or naptime for my child?

Your preschooler is involved in many fun and exciting activities throughout the day and is sure to get tired from being so busy. TLC provides your child with a “rest time.” Children are expected to sleep or have “rest time” for an appropriate length of time.

Can my child bring toys or stuffed animals from home?

Only a soft sleeping toy for “rest time” is acceptable for your child to bring in. We have the occasional Share Day that is announced when children can bring a toy from home to share with the class.

Can I visit my child during the day?

Parent participation in TLC is always highly encouraged. We have an open door policy at the Pre-School. Each week we have a parent who volunteers, comes in and reads a story to the children.

Are there any field trips planned?



The staff may take the children to play outside or for walks on the Daniels Farm school grounds. Throughout the school year, there might be an occasional field trip off the premises, but more than likely, there will be enrichments that will be brought into the Pre-School center. Any off-site field trip will require a permission form signed by the parent.

What happens if I'm late picking up my child?

We know that sometimes things happen to cause parents to be delayed in picking up their child. Please call the center if you are going to be late, and we will keep your child safe until your arrival. If you are late picking up on a regular basis, late pick-up monetary fines will be charged. You may be asked to leave the program. The Parent Handbook that is received at the start of the school year, outlines in more detail TLC's Late Pick-up policy and applicable fees.

When the Trumbull Public Schools are closed, is the Pre-School closed?

Throughout the school year, the Public schools are closed on national holidays, minor holidays and for parent/teacher conferences or teacher work days. The Pre-School is closed on the following holidays: Labor Day, Thanksgiving, the day after Thanksgiving, Christmas Eve, Christmas Day, the day after Christmas Day, New Years Eve, New Years Day, Good Friday, Memorial Day and in the summer, the Fourth of July.



What if the Board of Education unexpectedly cancels school, closes early or opens late?

This is generally because of inclement weather, and the Pre-School will follow the Board of Education guidelines. The Pre-School will open at 8:30 am on a delayed opening day. The Pre-School will close by 3:00 pm (or earlier) on early dismissal days, and if the schools are closed, then the Pre-School is closed too.



We hope we have answered any questions you might have. Please do not hesitate to contact the TLC office at 203-452-9626, email us at info@tlctrumbull.com or speak to the TLC Site Director at the Pre-School.

We look forward to welcoming you and your family to the TLC family!

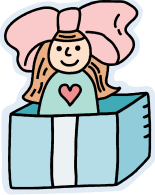
Visit us on the web:
www.tlctrumbull.com



Pre-School Schedule 2010 - 2011



7:00 - 9:00 File Folder Games and
Choice/Center Play**



9:00 - 9:15 Transition/Cleanup time



9:15 - 10:00 Circle Time and Snack

10:00 - 10:30 Outside Play



10:30 - 11:45 Centers and Themed Activities*



11:45 - 12:00 Cleanup

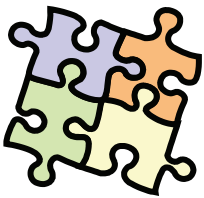
12:00 - 12:45 Lunch



12:45 - 1:00 Bathroom
(Bathrooms are available throughout the day)



1:00 - 2:30 Nap/Quiet Time



2:45 - 3:15 Afternoon Circle/Story



3:15 - 3:30 Snack

3:30 - 4:30 Outside/Gross Motor



4:30 - 6:00 Choice/Center Play, Computers,
Themed Activities



***Activities include but not limited to:** arts,
crafts, games, stories and other learning activities

****Centers include:** Science Center, Library, Music
Center, Dramatic Play Center, Writing Center,
Block Center, Math Center, Computer Center &
Free Art Center.

